

# Amalgamated

## PROPERTY MAINTENANCE

Amalgamated Painting Service SERVICING S.E.Q SINCE 1978  
Amalgamated Property Maintenance SERVICING S.E.Q SINCE 1999



Surfers Aquarius



Palazzo Versace

- Abseiling
- Balustrading
- Concrete Repair
- High Pressure Water Cleaning
- Painting
- Roof Anchors/Plans
- Tiling/Carpet
- Waterproofing
- Window Replacement

## Amalgamated Group

*Amalgamated Painting Service* was established on the Gold Coast in 1978 under the ownership of John Poletto and remains a privately owned, family run company to this day.

*Amalgamated Property Maintenance* was established in 1999 to service the Body Corporate and Repaint Industry and now, *Amalgamated Property Maintenance* is the only TRUE ONE STOP SHOP for undertaking Total Building Refurbishments with our Open Builders BSA Licence.

**BUILDING REFURBISHMENT - PAINTING - REMEDIAL SPECIALISTS**

**BRISBANE • GOLD COAST • SUNSHINE COAST**

E: [info@amalgamatedgroup.com.au](mailto:info@amalgamatedgroup.com.au)

[www.amalgamatedgroup.com.au](http://www.amalgamatedgroup.com.au)

## New Construction

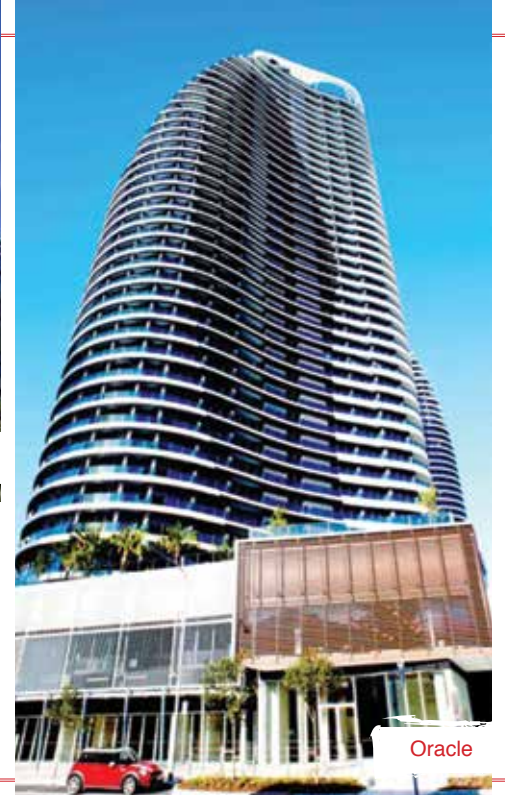
*Amalgamated Painting Service has a long and proud association with the Gold Coast sky line.*

From the beginning in 1978, Amalgamated Painting Service has been associated with many new Towers on the Gold Coast, including;

- Palazzo Versace
- Suncity Resort
- Bel Air
- Reflections
- Q1
- Circle on Cavill
- Oracle
- Chevron Renaissance
- Gold Coast University Hospital



Circle on Cavill



Oracle



Avalon



Aegean



River Place



The Inlet

## Hi Rise Repaint

In 1999 Amalgamated Property Maintenance was formed. During this time many Hi Rise Buildings on the Gold Coast and in Brisbane have been transformed, some with major remedial work being carried out prior to painting. We

work closely with Project Engineers, Project Managers, Body Corporates and Paint Manufacturers to ensure the

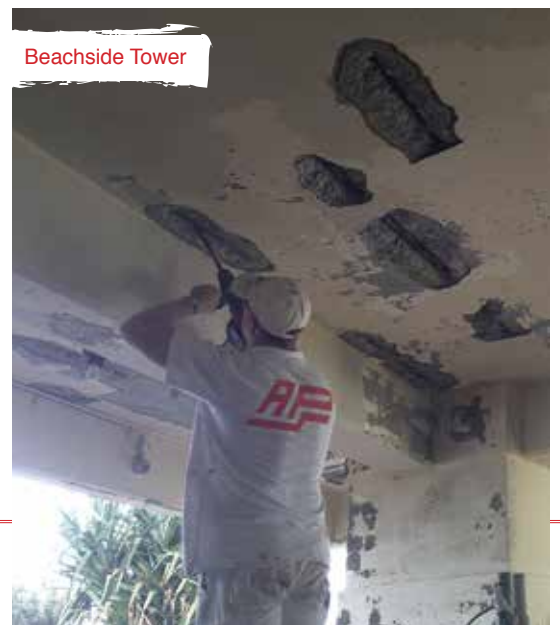
*best possible outcome* for the unit owner.

## Concrete Rectification

Concrete Cancer can affect any building in which reinforced concrete is used. *Early treatment* of spalling concrete will reduce the extent of the damage and be less expensive to repair.

Repairing involves:

1. Removal of the spalled concrete
2. Cleaning and treatment of the rust affected steel
3. Application of a suitable repair material
4. Reforming the concrete to the original profile



Beachside Tower

## Abseiling

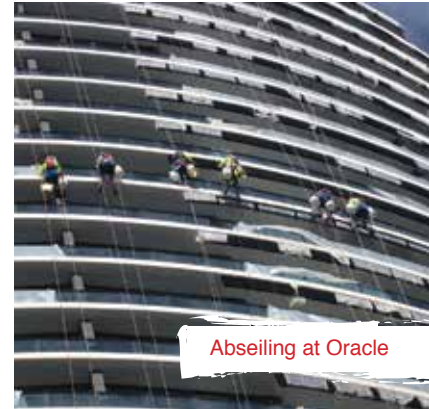


Platinum on the Beach

Amalgamated Property Maintenance offers a *team of fully trained, highly skilled abseilers.*

This method of Hi Rise tradesmanship can result in:

- Reduced hire cost of scaffold
- Safety to workers and the public
- Speeds up repaint process



Abseiling at Oracle

## Protecting Steelwork

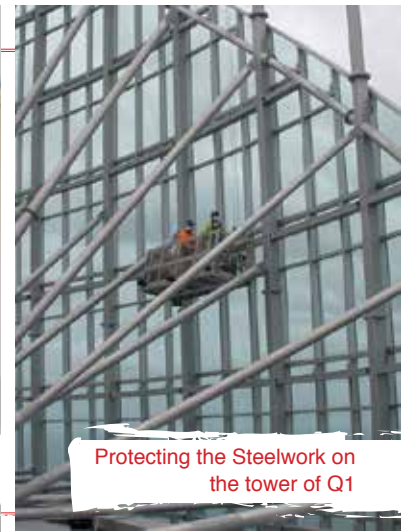
Amalgamated Property Maintenance is experienced in coating all types of steel substrates.

*“Our commitment is your guarantee of high quality workmanship and efficient, cost effective service.”*

A major project was undertaken at Platinum on the Beach where Powdercoated screens had to be removed from the building, taken away and recoated, then replaced.



Platinum on the Beach



Protecting the Steelwork on the tower of Q1



## Water Proofing

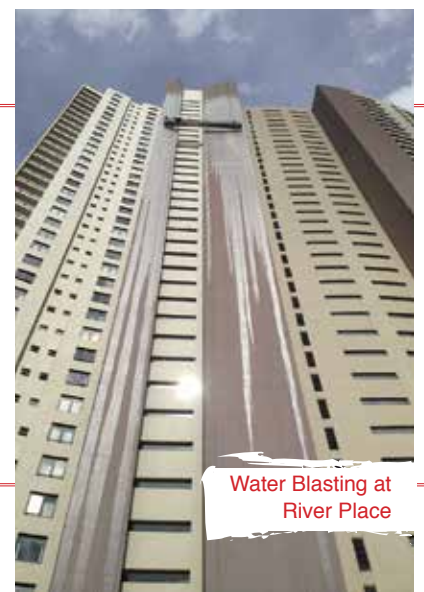
There are *many types of water proofing products* on the market today.

These products can be applied to walls, floors and other cementitious surfaces.

## Water Blasting

Hi Pressure water blasting is *generally used in paint preparation* but can also form part of a Paint Manufacturers Warranty. Buildings, especially those in a coastal area will attract salts and pollutants.

Washing down your building regularly will extend the life of your coating.



Water Blasting at River Place

## Health & Safety

Amalgamated Property Maintenance is committed to maintaining it's first class track record in an Industry where *safety is paramount.*

*This is achieved through:*

- Complying with statutory requirements, codes, standards and guidelines
- Setting up objectives and targets with the aim of eliminating work related incidents in relation to our activities, products and services
- Defining roles and responsibilities

*Our strategies include:*

- Ensuring occupational health, safety and environment management principles are included in all organisational planning activities
- Providing ongoing education and training to all of our employees
- Consulting with employees and other parties to improve decision making on occupational health, safety and environment matter
- The employment of our full time W.H.S.O long term



## Remedial Building Rectification & Facade Refurbishment



Building Refurbishment at Calais / Main Beach



Surfers Aquarius

### OUR TEAM

*John Poletto - Director*  
*Darrick Poletto - Director*  
*Chris Letblean - Director Sunshine Coast*  
*Matt Kennedy - Director Brisbane*  
*Tony Beales - Business Manager Gold Coast*  
*Bev Allen - Repaint Consultant*  
*Karen Letblean - Administration Sunshine Coast*  
*Mick Jolly - APS Project Supervisor (40 years)*  
*Phil Riley - APM Projects Supervisor (24 years)*  
*Steve Franklin - APS Site Supervisor (24 years)*  
*Peter McCarthy - APS Site Supervisor*  
*Glen Davies - APM Supervisor*  
*Andy Wright - APM Supervisor*  
*Norman Evans - W.H.S.O.*  
*Brenda Boff - Financial Controller*  
*Helen Hall - Administration*  
*Sharon Vandy - Payroll Officer*

## BUILDING SERVICES - PAINTING - PROJECT MANAGEMENT

Amalgamated Property Maintenance now undertakes all Internal and External Refurbishment and Remedial works.

Email or call us and we will send one of our experienced staff out to talk to you or your Committee!

## BUILDING REFURBISHMENT - PAINTING - REMEDIAL SPECIALISTS

**BRISBANE • GOLD COAST • SUNSHINE COAST**

E: [info@amalgamatedgroup.com.au](mailto:info@amalgamatedgroup.com.au)

[www.amalgamatedgroup.com.au](http://www.amalgamatedgroup.com.au)